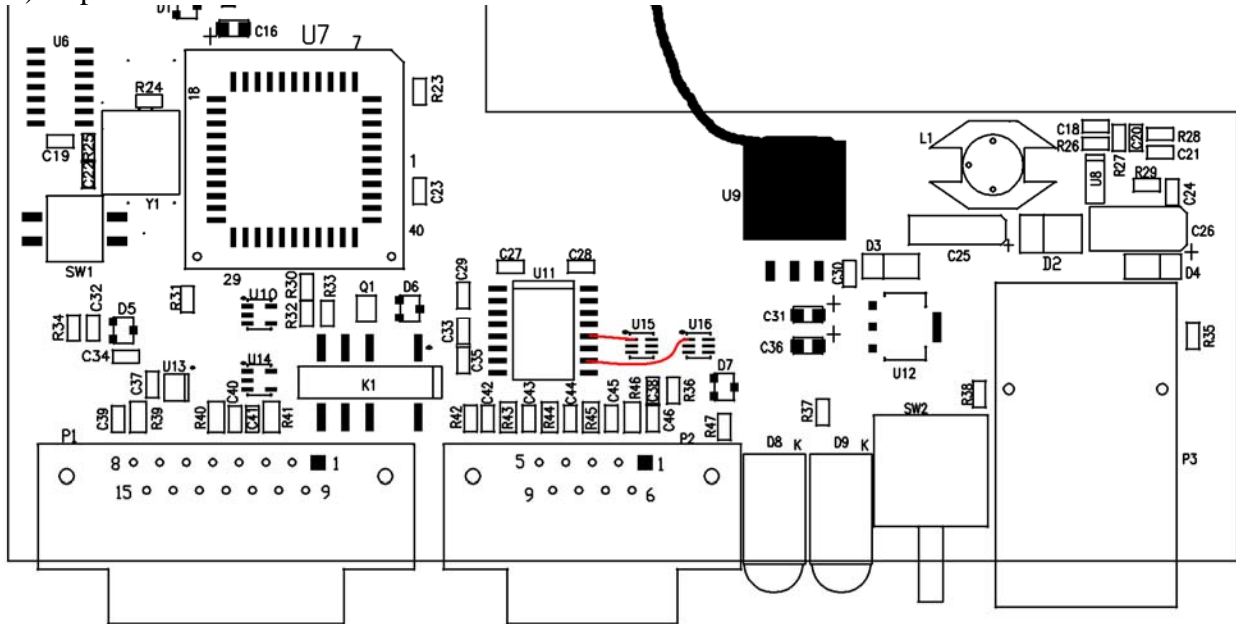
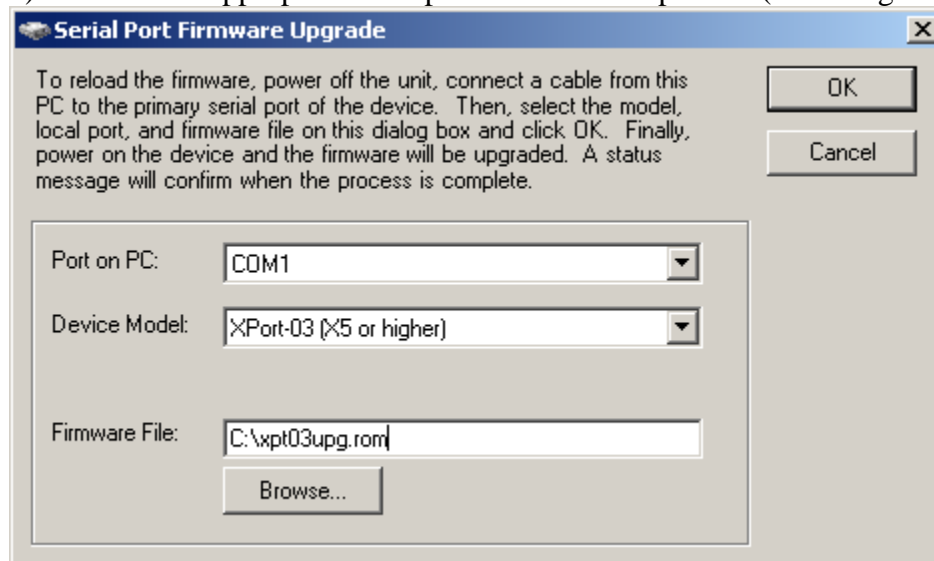


BPME Xport Serial Recovery Instructions

- 1) Open the BPME cover and make modifications shown and described below.



- a. Remove U15 and U16 (you can try it without doing this first since they can be a pain to get back on but sometimes it doesn't work for me if I don't remove these – if it doesn't work remove them and try again)
 - b. Solder a jumper wire between Pin 1 of U15 and Pin 12 of U11
 - c. Solder a jumper wire between pin 1 of U16 and Pin 10 of U11
- 2) Make sure you have Device Installer software installed on your PC. You can obtain it here: (you may need to install the .NET framework v1.1 if you don't already have it)
http://ltxfaq.custhelp.com/cgi-bin/ltxfaq.cfg/php/enduser/std_adp.php?p_faqid=644
 - 3) Connect a serial cable between the PC and the BPME.
 - 4) Open Device Installer. Go to Tools->Advanced->Recover Firmware
 - 5) Choose the appropriate com port and choose Xport-03 (X5 or higher)



- 6) Click browse and find the xpt03upg.rom file.
- 7) Click OK and cycle the power to the unit when prompted.
- 8) The unit will recover the firmware.
- 9) Now repeat from step 4 but select the xptexs.rom firmware file.
- 10) Turn off power to the BPME, remove the jumpers and replace U15 and U16 if they were removed.
- 11) Run the network upgrade procedure to load the webfiles.